

The BSG Draw System

A 100% Automated Betfair Betting System – The BSG Draw System from www.bettingsystemsguide.com

Aim: £3,000 bank trying to make £500 per month.

+50 points per month average profit with my BFBM bot set (+3.5 points per month without)

300 point bank

-220 point drawdowns

Costs: £100 per month bsgDrawSystem subscription (First month free)

(Also needs a £10 per month Bf Bot Manager Subscription)

1 Overview

2 Detailed Setup Guide

1 Overview

Key Data:

Monthly Results (Running since June 28th 2023)

BSG bots	All 5 Bots BSG Draw System															
	Total							Monthly							1-point stakes	Allotted Bank
	P/L	Bets	Won	Win Rate	ROI	Cost	NET P/L	P/L	Total bets	Won	Win Rate	ROI	Cost	NET P/L		
2023-7-22	£1,736.65	372	145	38.98%	45.75%	-£100	£1,637	£1,736.65	372	145	38.98%	45.75%	-£100	£1,637	£10	£2,000
2023-8-22	£996.89	911	274	30.08%	10.72%	-£200	£797	-£739.76	539	129	23.93%	-13.45%	-£100	-£840	£10	£2,000
2023-9-18	£2,404.89	2043	605	29.61%	11.54%	-£300	£2,105	£1,408.00	1132	331	29.24%	12.19%	-£100	£1,308	£10	£2,000
2023-10-17	£3,914.52	3666	1087	29.65%	10.46%	-£400	£3,515	£1,509.63	1623	482	29.70%	9.12%	-£100	£1,410	£10	£2,000
2023-11-17	£4,950.92	5027	1469	29.22%	9.65%	-£500	£4,451	£1,036.40	1361	382	28.07%	7.46%	-£100	£936	£10	£2,000
2023-12-18	£4,844.63	5993	1718	28.67%	7.92%	-£600	£4,245	-£106.29	966	249	25.78%	-1.08%	-£100	-£206	£10	£2,000
2024-1-16	£3,469.28	6564	1827	27.83%	5.18%	-£700	£2,769	-£1,375.35	571	109	19.09%	-23.60%	-£100	-£1,475	£10	£3,000
2024-2-18	£4,008.08	7104	1989	28.00%	5.53%	-£800	£3,208	£538.80	540	162	30.00%	9.78%	-£100	£439	£10	£3,000

Group by: BSG Draw System TippingSports (Since 2023-6-28) (P/L: £4,004.10)

			A1 (trg1) BSG Draw System £10 Opposite Odds	£652.42	315/980	32.00%
			B2 BSG Draw System £10 Current Odds	£919.26	856/2607	33.00%
			B3 BSG Draw System £10 IP Current Odds	£1,227.81	441/1742	25.00%
			B4 BSG Draw System £10 IP Opp Odds	£699.86	190/790	24.00%
			B5 BSG Draw System £10 IP Opp +4	£508.73	187/985	19.00%
			T6 Under Win Rate Tracker £1 Current Odds	-£46.37	284/937	30.00%
			T7 Over Win Rate Tracker £1 Current Odds	£42.39	63/155	41.00%

P/L: £4,004.10

(2024-3-11 screenshot)

A1, A2 bots +£570 over 16 months on £1 stakes (+£35 average profit per month over 16 months on £1 stakes)

A3, A4, A5 bots +£345 over 8 months on £1 stakes (+£43 average profit per month over 8 months on £1 stakes)

Original Test Bots Screenshot (2024-3-10)						Bot	Test Bot Started	ROI	Months Running	Points per month	
Group by: BSG Draw System 01 Original Test Bots (P/L: £972.55)											
			A1 BSG draws opp £1 (2022-10-29) TS tips	£274.51	949/2838	33.00%	A1	2022-10-28	9.67%	16	+17
			A2 BSG draws curr £1 (2022-10-28) TS tips	£296.08	3115/9456	33.00%	A2	2022-10-28	3.13%	16	+18.5
			A3 BSG draws InPlay curr £1 (2023-6-16)	£151.42	626/2512	25.00%	A3	2023-6-16	6.03%	8	+18.9
			A4 BSG draws InPlay opp. £1 (2023-6-16)	£113.55	413/1807	23.00%	A4	2023-6-16	6.28%	8	+14.19
			A5 BSG draws InPlay opp. +4t draws £1 (20...	£80.79	258/1283	20.00%	A5	2023-6-16	6.30%	8	+10
			A6 BSG draws CC0-0 £1 (2024-2-19) TS tips	£56.20	39/279	14.00%	A6	2024-2-19	20.14%	1	+56
P/L: £972.55											135

The data suggests £135 average profit per month on £1 stakes is possible.

On £10 stakes that could be £1,350 if the trend continues.

Group by: BSG Draw System TippingSports (Since 2023-6-28) (P/L: £2,404.89)						
			A1 BSG Draw System £10- Opposite Odds	PAUSED	£231.38	90/273 33.00%
			B2 BSG Draw System £10 - Current Odds	PAUSED	£758.17	307/890 34.00%
			B3 BSG Draw System £10 - IP Current Odds	PAUSED	£687.82	139/527 26.00%
			B4 BSG Draw System £10 - IP Opposite Odds ...	PAUSED	£727.52	69/353 20.00%
					P/L: £2,404.89	

Results on **5th October** 2023. (-£600 drop over 26 days)

Group by: BSG Draw System TippingSports (Since 2023-6-28) (P/L: £1,840.32)

			A1 (trg1) BSG Draw System £10 Opposit...		STARTED	£361.66	137/410	33.00%
			B2 BSG Draw System £10 Current Odds		STARTED	£416.68	406/1233	33.00%
			B3 BSG Draw System £10 IP Opp +4		STARTED	£519.44	88/471	19.00%
			B4 BSG Draw System £10 IP Current Od...		STARTED	£623.75	190/751	25.00%
			B5 BSG Draw System £10 IP Opp Odds		STARTED	-£65.87	8/47	17.00%
			T6 Drawdown Tracker £10 Current Odds		STARTED	-£15.34	23/86	27.00%
						P/L: £1,840.32		

On October 5th the set was in a short-term losing streak.

My drawdown tracker (T6) tells me that it currently has a win rate of 27% from the last 86 bets. The bot set is now down from the September total of +2,400 to +1,840. From my experience with the 7,000+ bets of the original bot set, I know that this will eventually return to the 33% win rate and the bot set profit will move forward as a whole.

Results on **8th October** 2023 (+£1,338 increase over 3 days)

Group by: BSG Draw System TippingSports (Since 2023-6-28) (P/L: £3,178.10)

			A1 (trg1) BSG Draw System £10 Opposit...		STARTED			0/1	£551.81	156/455	34.00%
			B2 BSG Draw System £10 Current Odds		STARTED			0/3	£768.06	442/1312	34.00%
			B3 BSG Draw System £10 IP Opp +4		STARTED			0/0	£642.82	96/492	20.00%
			B4 BSG Draw System £10 IP Current Od...		STARTED			0/2	£1,016.71	214/807	27.00%
			B5 BSG Draw System £10 IP Opp Odds		STARTED			0/2	£181.96	24/87	28.00%
			T6 Drawdown Tracker £1 Current Odds		STARTED			0/3	£16.75	57/162	35.00%
						P/L: £3,178.10					

In the tracker bot (T6) we can see the win rate has returned to over 33%. I will then note that data and reset the tracker bot so I can know how far into a drawdown I am.

Results on **18th October** 2023 (+£969 increase over 10 days)

Group by: BSG Draw System TippingSports (Since 2023-6-28) (P/L: £4,147.61)

			A1 (trg1) BSG Draw System £10 Opposit...		STARTED			0/1	£589.95	185/548	34.00%
			B2 BSG Draw System £10 Current Odds		STARTED			0/1	£1,003.95	506/1489	34.00%
			B3 BSG Draw System £10 IP Opp +4		STARTED			0/2	£878.85	113/554	20.00%
			B4 BSG Draw System £10 IP Current Od...		STARTED			0/2	£1,240.15	247/928	27.00%
			B5 BSG Draw System £10 IP Opp Odds		STARTED			0/2	£434.89	50/178	28.00%
			T6 Under Win Rate Tracker £1 Current O...		STARTED			0/0	-£4.11	12/41	29.00%
			T7 Over Win Rate Tracker £1 Current Od...		STARTED			0/0	£3.93	16/45	36.00%
						P/L: £4,147.61					

Results on **6th November** 2023 (-£219 decrease over 19 days)

Group by: BSG Draw System TippingSports (Since 2023-6-28) (P/L: £3,927.86)

			A1 (trg1) BSG Draw System £10 Opposite Odds		PAUSED				£481.53	£481.53	223/690
			B2 BSG Draw System £10 Current Odds		PAUSED				£983.33	£983.33	601/1785
			B3 BSG Draw System £10 IP Opp +4		PAUSED				£833.27	£833.27	133/657
			B4 BSG Draw System £10 IP Current Odds		PAUSED				£1,204.23	£1,204.23	297/1138
			B5 BSG Draw System £10 IP Opp Odds		PAUSED				£443.55	£443.55	86/337
			T6 Under Win Rate Tracker £1 Current Odds		PAUSED				-£10.29	£47.85	28/98
			T7 Over Win Rate Tracker £1 Current Odds		PAUSED				£0.00	£1.69	0/0
						P/L: £3,927.86					

Results on 9th November 2023 (+£424 decrease over 3 days)

Group by: BSG Draw System TippingSports (Since 2023-6-28) (P/L: £4,346.64)

				A1 (trg1) BSG Draw System £10 Opposit...		STARTED			0/2	£470.00	228/706	32.00%
				B2 BSG Draw System £10 Current Odds		STARTED			0/2	£942.97	610/1816	34.00%
				B3 BSG Draw System £10 IP Opp +4		STARTED			0/3	£922.49	135/664	20.00%
				B4 BSG Draw System £10 IP Current Od...		STARTED			0/3	£1,384.69	305/1160	26.00%
				B5 BSG Draw System £10 IP Opp Odds		STARTED			0/3	£635.78	93/354	26.00%
				T6 Under Win Rate Tracker £1 Current O...		STARTED			0/1	-£14.33	37/129	29.00%
				T7 Over Win Rate Tracker £1 Current Od...		STARTED			0/1	£5.04	5/10	50.00%
P/L: £4,346.64												

In these screenshots we can get an idea for the bumpy ups and downs of the system.
It can lose £900 in a day and win £1,300 over 3 days on £10 stakes.

My recommended bot set

The bot set I will send you is this one "Set 045". It is setup for a £300 starting bank with £1 stakes.
Please adjust it to your starting bank level which is stake x 300.

Group by: BSG Draw System TippingSports Set B-Bots (Set 045) (P/L: £0.00)

				B1 BSG Draw System £1 Opposite Odds (045)	£0.00	0/0	0.00%
				B2 BSG Draw System £1 Current Odds (045)	£0.00	0/0	0.00%
				B3 BSG Draw System £1 IP Curr. (045)	£0.00	0/0	0.00%
				B4 BSG Draw System £1 IP Opp. (045)	£0.00	0/0	0.00%
				B5 BSG Draw System £1 IP Opp. +4t (045)	£0.00	0/0	0.00%
				B6 BSG Draw System £1 CC0-0 (045)	£0.00	0/0	0.00%
				T7 BSG Draw System £0.1 Tracker Current O...	£0.00	0/0	0.00%
P/L: £0.00							

How does the bot set work?

Bot B1 receives a tip from the TippingSports account "[bsgDrawSystem](#)" and places a draw bet at the opposite price. This means it will have many bets unmatched and lapsed, but it will have a higher ROI. (The opposite price means the odds currently show as the pink lay price, not the blue back price.)

Bot B2 places a draw bet on the same selection B1 did but at the current back price available. It has a lower ROI of around 3% but has a higher volume of bets. This is the core trend that we are following.

Bot B3 places an extra draw bet on the same selection B1 did but in-play at the current odds if a goal is scored. This will have fewer bets but a higher ROI.

Bot B4 places an extra draw bet on the same selection B1 did but in-play at the opposite odds if a goal is scored. This will have fewer bets but a higher ROI.

Bot B5 places an extra draw bet on the same selection B1 did but in-play at the opposite odds +4 ticks if a goal is scored. This will have much fewer bets but a higher ROI.

Bot B6 places a pre-match bet on the 0-0 Correct Score selection for the match.

Bot T7 places a pre-match bet on the draw. It is a resettable bot that is meant to be used for tracking the short term core trend win rate.

Long term win rate 33%

The long-term win rate of the core strategy is 33%. I use a tracker bot to tell me the win rate either of the current month or current losing run or just since I last checked my bot. This gives me an idea of if the bot set results are based on a good run or a bad run. If the bot set is making a loss but the win rate is 15%, then I know it is just a statistically unlucky run without draws and I don't panic, and I know that win rate will eventually come back up to 33%. I have seen it happen time and time again with the +7,000 worth of historical data. Based on this, when the short-term win rate is under 20%, I sometimes increase stakes knowing that the draw bets are due to bring the win rate back up to 33%. My stop loss on this system is if the bots are making a loss and the win rate is at 33%. This would mean that the value has gone from this selection method.

Betting System Target

The ultimate aim of this betting system is to produce regular profit and be regarded as a reliable investment producing regular dividends.

Staking Plan Notes

Level Staking Recommended

Staking for this bot: Risk 1 points total on each tip of a 300-point bank, that is a total of 6 points risked on each match for the 6 bots.

With the above staking, losing -50 points in a day can be expected as normal.

-100 points drawdown is expected as part of any normal monthly negative run.

-220 points is the maximum negative drawdown experienced so far (January 2023), but it recovered from that.

So be mentally prepared that the nominal bank will go down to near -100 points in any given month. At very worst, it might go down to -220 points, but on level stakes it has always come back in all of its negative runs since November 2022. This is based on 9,000 bets worth of data from the Bet 2 bot.

1,000 starting bank = 3 GBP stakes

3,000 starting bank = 10 GBP stakes

There are 6 betting bots and a tracker bot in this set, so 6 points at most is risked per selection.

DRAWDOWN TRACKER BOT T7

Use this bot to track the drawdown and know how far into a negative run you are.

When the bot is in profit and has a win rate of 33% or more, make a note of the data as the below example, then reset it.

EXAMPLE OF DRAWDOWN NOTES

Dates and data when Drawdown Tracker reset

2023-9-21 1230 started

2023-9-21 2200 +8.57 8/17 47%

2023-10-5 1600 +18.52 200/600 33% (This means it had a losing run lasting 600 bets but recovered and achieved a 3% ROI after hitting the 33% win rate)

WHEN TO INCREASE STAKES

If you are looking for a good moment to increase stakes, then wait for this tracker bot to show a win rate of 20% or less. This is a good time to increase stakes since more draws than usual are due to push the win average back up to the long-term trend of 33%.

STOP-LOSS / EXIT POINT

If this bot shows a win rate of 33% but it is not in profit or the ROI has dropped to under 2% it is a sign that the betting system is losing its edge for some reason. This is our stop loss and exit point for the system.

Conclusion

The numbers look good for the football draw system. It has 9,000+ bets of data to support the core trend.

BUT it has long losing runs and **it is a bumpy system. There are winning and losing months along the way.** You need to understand value betting and have strong willpower to continue with the betting plan even in the losing runs. It works long term, but you must stay with the plan and not give up. It is not for weak minds. It is for people who believe in the data. 9,000+ bets of data over 16 months is strong support for this.

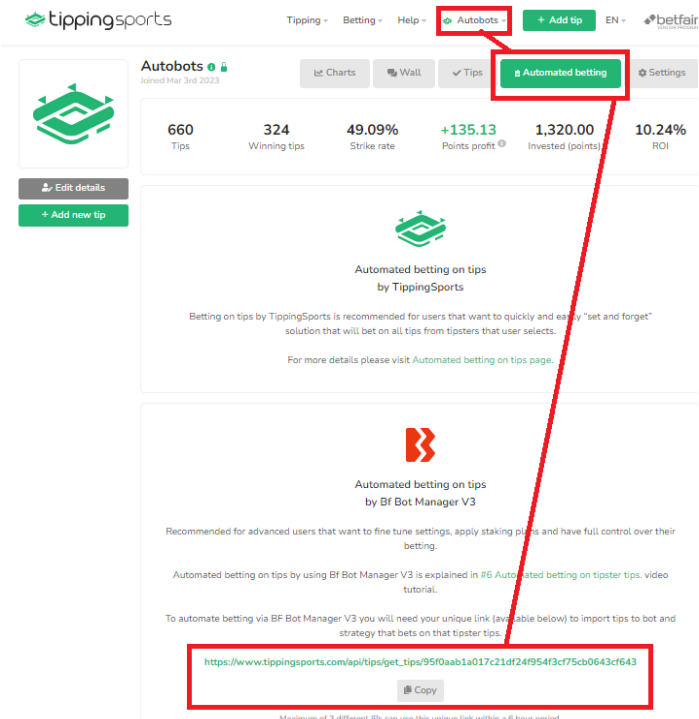
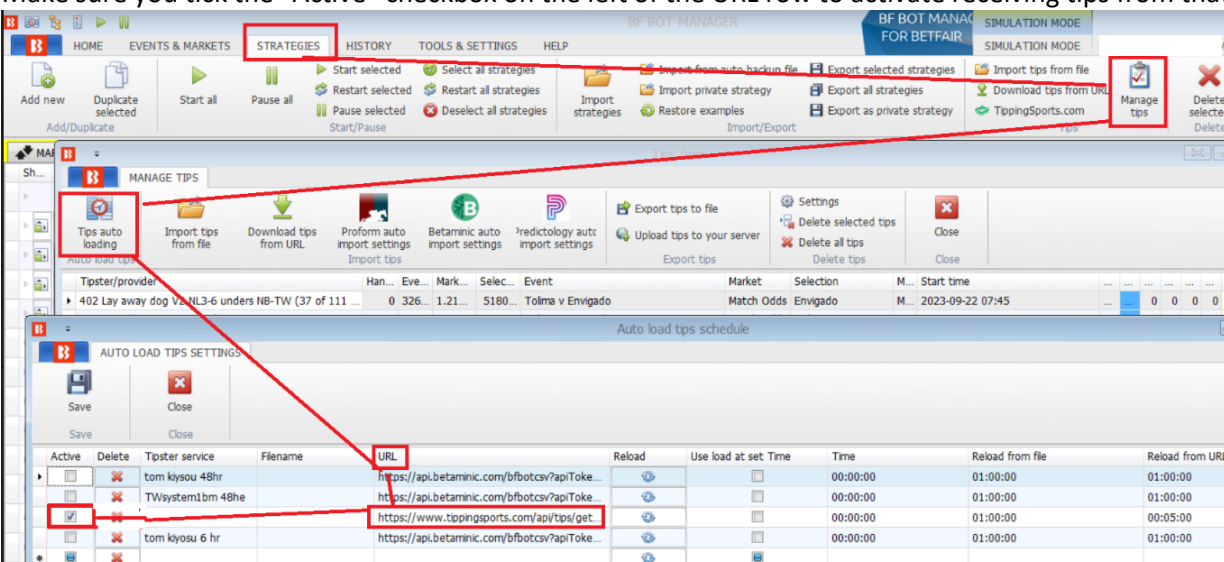
How to Follow

1. Get a www.Betfair.com account.
2. Get the [Bf Bot Manager automated betting software](#). (Free 7-day trial, £10 per month subscription)
3. Get a www.tippingsports.com account (FREE to sign up, do not pay for their automated betting service, we are using BFBM). Connect your TippingSports account to your Bf Bot Manager (see the detailed instructions below, or the [TippingSports manual](#) p20.)
4. On TippingSports, click "Follow" on my TippingSports account "[bsgDrawSystem](#)". These are the core strategy tips.
5. Email me to tell me your TippingSports username so that I can approve your account to follow my tips. I will send you the bot set.

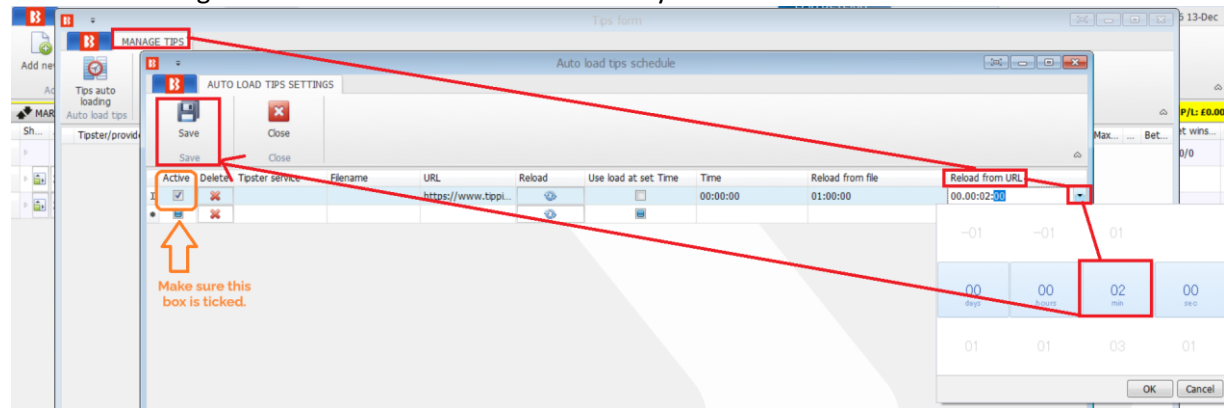
- Import the bot set to your BFBM. Edit the stake settings in my bots to match your chosen starting bank. (Default setting is 1 GBP stakes with a 300 GBP starting bank.) Setup Match Odds and Correct Score markets autoloading. Then, start the bots!
- After one month, if you want to continue, I will email to ask you to pay the subscription fee to my PayPal tomkiyosu@gmail.com or you can ask me for bank transfer details.

2 Detailed Setup Guides

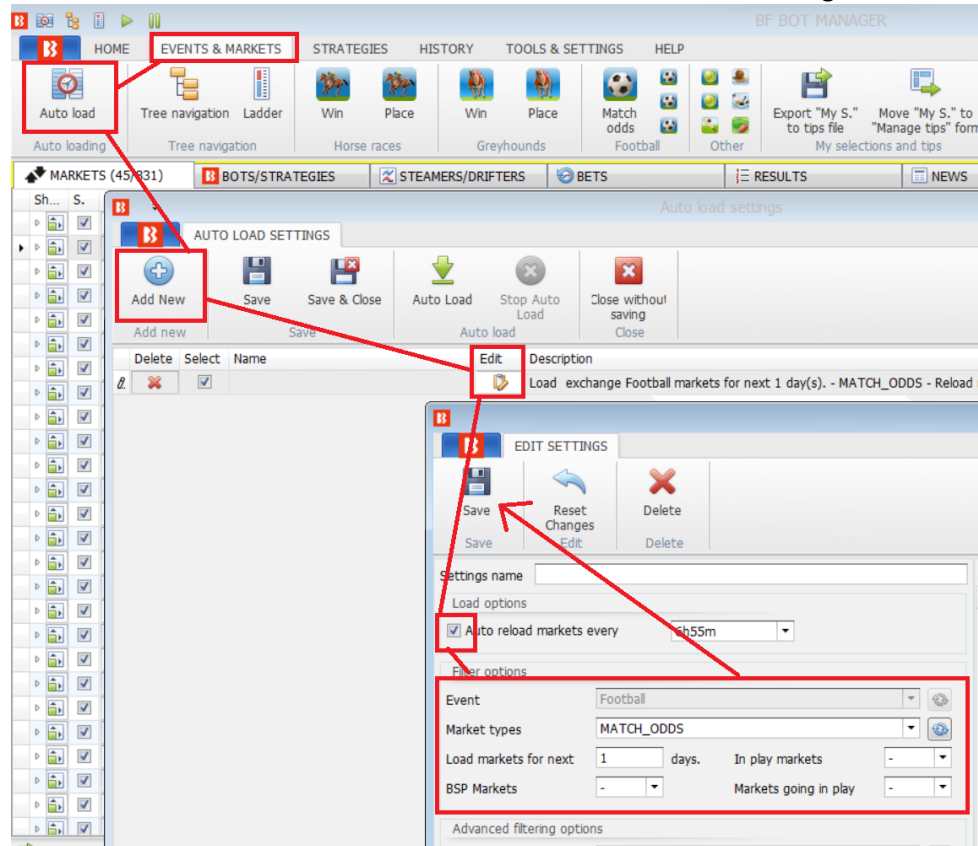
How to connect TippingSports to the Bf Bot Manager

- Sign up for TippingSports. (Free, you do not need to pay them anything, ever.)
- Go to your account page.
Click on the “Automated betting” tab.
Copy the URL lower down on this page in the “Automated betting on tips by Bf Bot Manager V3” section.

- Paste this URL into your Bf Bot Manager “Manage tips” form area.
Strategies > Manage tips > Tips auto loading
Make sure you tick the “Active” checkbox on the left of the URL row to activate receiving tips from that URL.


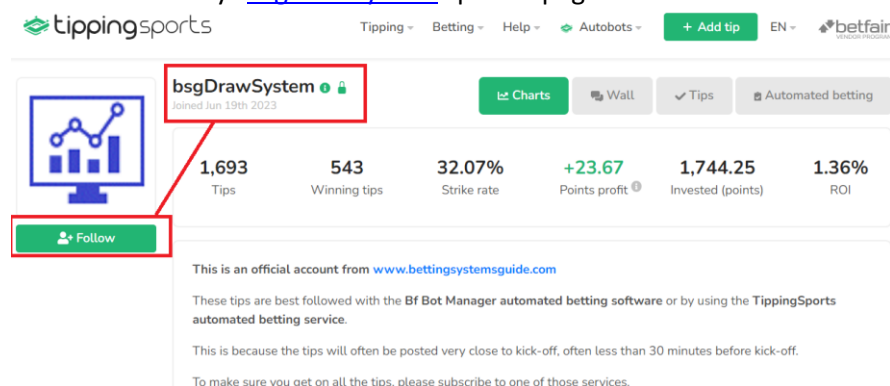
Be sure to change the “Reload from URL” time to every 2 minutes.



Also make sure “Match Odds” and “Correct Score” markets are being autoloaded.



4 Click follow on my “[bsgDrawSystem](#)” profile page.



5 Email me to tell me your TippingSports username so that I can approve your account to receive the tips.

BOT TROUBLESHOOTING

If the bot is not placing bets:

1. Check if tips are being received in your Manage Tips form.

If there are tips, then the problem is with the BFBM setup. Check your bots, check you market autoloading, check your tip import settings.

If there are no tips, then the problem is that your TippingSports account is not properly connected to the BFBM software.